

FIMalyzer & RCDC Editor

■ Introduction

Tools4FIM is a software company specializing in the development of customized tools and components designed to complement and enhance Microsoft's identity and access management (IAM) platform, Forefront Identity Manager 2010 (FIM).

Each tool has been created in direct response to the needs of consultants in the field and as a result of our own experience working on FIM deployments. We work closely with Microsoft and its affiliates to ensure our tools are state of the art.

They are designed to remove trial, error and guesswork, resulting in more productive (and less frustrated) consultants, reduced implementation times, reduced deployment risk, and enhanced functionality.

We sell our products directly and through our partner network to organizations across the globe. Trial versions are available for immediate download.



■ The FIMalyzer - comprehensive analysis and reporting of your FIM configuration

FIM provides a comprehensive solution to address the many challenges of managing identities, credentials, and identity-based access policies across heterogeneous environments. Through automated provisioning and entitlement management, it provides organizations with the reassurance that the right

people have access to the right systems at the right time.

But we're not here to sell you FIM. If you're reading this, you're likely to be sold on the benefits of deploying a robust IAM platform. We'd like to introduce you to the FIMalyzer, a powerful tool designed by Tools4FIM to enable organizations to analyze and report on their FIM platform and synchronization service configuration.

More and more organizations are experiencing an increasing need to validate, troubleshoot and report on the state of their identity platforms. The FIMalyzer analyzes the configuration of FIM 2010 installations (it also works with ILM 2007) and presents the output either interactively, or in the form of a Word report.

It provides organizations with the capability to:

- Explore the configuration through forward and backward links between resources (objects)
- Quickly find resources of interest
- Answer questions like "Which objects refer to this object?", and "Who can see which resources?" (assuming usage keywords have been employed properly)
- Automatically generate a report of the entire configuration - effectively a detailed and accurate technical specification
- Customize that report to include your own styles, diagrams and other documentation
- Quickly regenerate the report whenever configuration changes arise
- Support audit requirements with accurate system documentation
- Get new staff up to speed quickly, reducing time spent in maintenance and troubleshooting

■ Exploring the configuration

Once installed, the FIMalyzer can be used as frequently as necessary to provide comprehensive analysis and reporting on your organization's FIM and synchronization service. You can explore the configuration, examining the relationship between resources (objects). Its search function can also be used to search on object links and to follow chains of causality in workflows – something that can't be done in FIM's Portal interface.

The FIMalyzer's interface is also used to decide how much detail to include in your report – for example

FIMalyzer & RCDC Editor

which objects, or types of objects to include – and to decide how it should look (the colours and styles used for headings, tables etc.).

■ Customized reporting

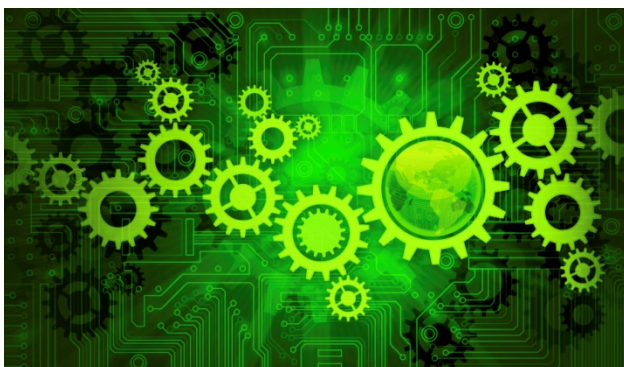
The output of your report can be viewed online as a PDF or HTM, or as a printed Word document. It can be produced using your own template including your organization's branding and styles. Additional text and graphics can be added in order to provide additional information that is not part of the FIM configuration (such as design goals, overall architecture, documentation of related systems and so on). Since Word can compare documents very effectively, if you produce two reports for two systems (e.g. test and production), you can compare the reports and easily identify differences. This is extremely useful in verifying correct migration of system changes, or where a system may have been modified out of band.

■ How it works

Once the FIMalyzer is installed and you have selected your reporting criteria in the interface, you create a report as follows:

- Export the FIM Synchronization Service configuration (Export server configuration)
- Export the FIM Service (Portal) configuration using the PowerShell CmdLets
- Identify any source code that is part of the configuration
- Place the above in sub-folders within a folder for the project, and make this available to the tool

The FIMalyzer runs against this configuration, allowing you to explore the data and/or generate a report based on the results.



■ RCDC Editor – a fast and easy way to customize RCDCs

The RCDC Editor has been designed by Tools4FIM to significantly reduce the administrative effort involved in configuring FIM's Resource Control Display Configurations (RCDC's). FIM's RCDCs are the forms that are used for modifying FIM resources. Each includes a myriad of controls (text boxes, drop down menus and so on) to cater for every requirement. Most organizations will want to customize each RCDC, by modifying, adding, moving and deleting controls, so only the necessary attributes appear. However, the RCDC data is stored as XML, and editing it involves significant manual effort and very accurate XML skills.

Tools4FIM's RCDC Editor takes the pain away, enabling organizations to quickly and easily edit an RCDC to match its specific requirements, without the need for intricate XML work. The tool presents each RCDC in a WYSIWYG editor, enabling the administrator to customize the user interface very easily. Administrators can add and remove tabs, include new attributes, and drag to new positions. They can also readily configure the often complicated properties of controls.

Implementing the RCDC Editor is simple. Once the tool is downloaded and a licence acquired, simply export the configuration of FIM using Powershell Command and then run it in the RCDC Editor. Once you have completed your modifications using the WYSIWYG editor, you simply import the relevant RCDC(s) saving huge time and effort compared to modifying the XML.

■ Functionality

- Handles all the control types you are likely to want to edit
- Lets you drag controls around and between tabs
- Lets you create and delete tabs
- Has a comprehensive help file to guide you through more complex options
- Keeps a copy of your original configuration as a backup
- Allows searches based on display name or usage keyword

FIMalyzer & RCDC Editor

■ Resultant rights evaluation

One of the biggest headaches when developing and testing a FIM implementation is understanding the resultant rights of any user in respect of a given resource – such as (and of most interest) another user. There are many different types of user, each with different privileges. It is useful to be able to see what rules apply to each user, but this information is tied up in various Management Policy Rules which can be very difficult to see within the Portal.

The RCDC Editor allows you to easily check these resultant rights by allowing you to emulate any user to see what they would see. For example, which attributes are visible, and which they have authority to edit. It can even reveal mistakes, such as attributes that can be edited, but not read.

■ What next?

Download the RCDC Editor for free from the Tools4FIM website and try it out for yourself. Licences retail at \$496.

For more information and trial downloads on these products and other tools available from Tools4FIM, please go to <http://www.tools4fim.com>

Tools4FIM is a software company that specializes in the development of customized tools and components for FIM2010.

It is our aim is to develop and make available to customers across the globe, a range of accessible and easy to use tools and utilities that enhance and accelerate FIM 2010 projects. Our tools are created in response to the needs of consultants in the field and as a direct result of working on real projects.

Tools4FIM products are specifically designed to reduce implementation times and minimize the risks of deployment. We work closely with Microsoft and its affiliates to ensure our tools are compatible with the latest Microsoft IDA technologies

Copyright Tools4FIM 2011